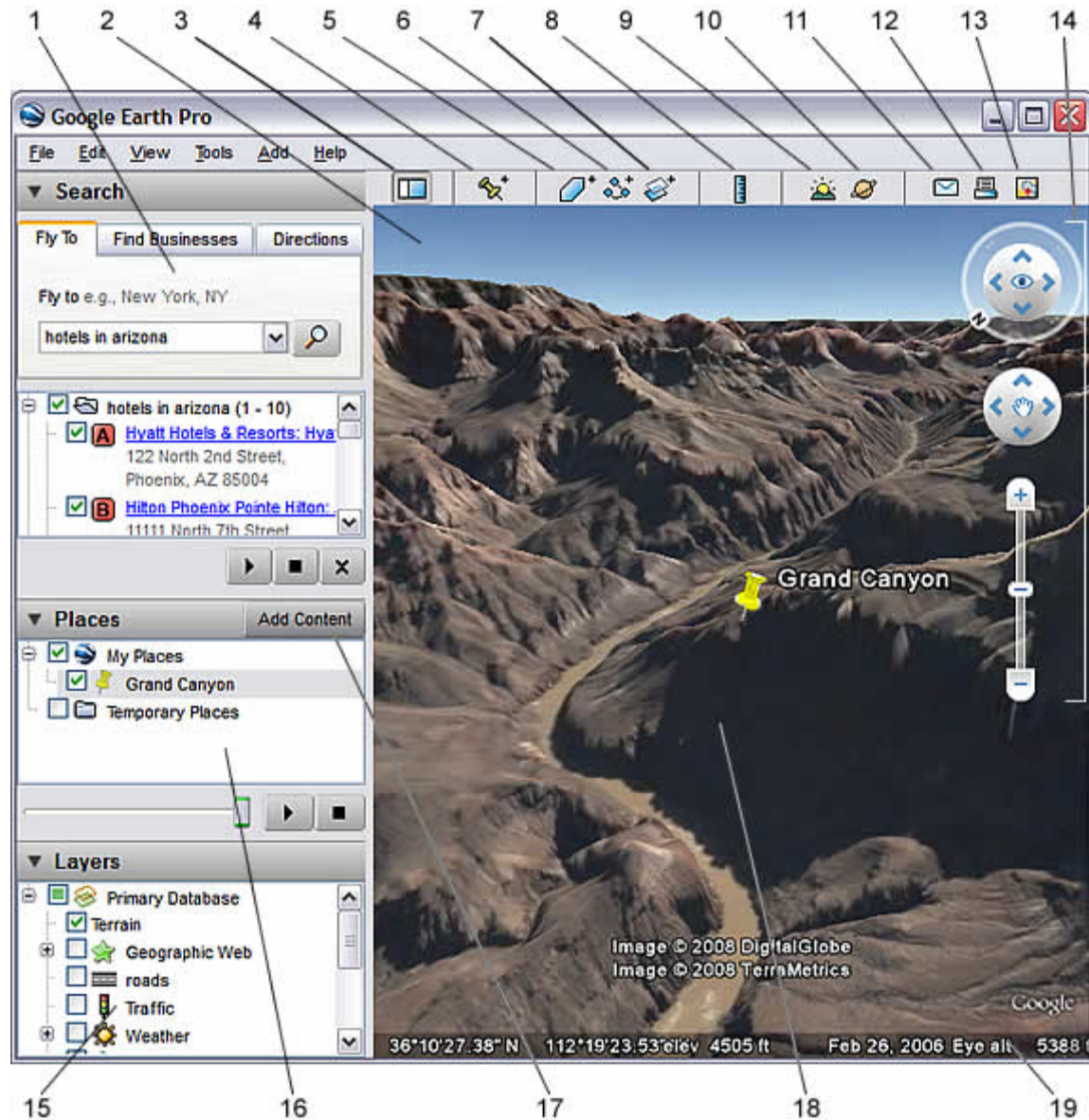


Google Earth



1. **Search panel** - Use this to find places and directions and manage search results. Google Earth EC may display additional tabs here.
2. **Overview map** - Use this for an additional perspective of the Earth.
3. **Hide/Show sidebar** - Click this to conceal or the display the side bar (Search, Places and Layers panels).
4. **Placemark** - Click this to add a placemark for a location.
5. **Polygon** - Click this to add a polygon.
6. **Path** - Click this to add a path (line or lines).
7. **Image Overlay** - Click this to add an image overlay on the Earth.
8. **Measure** - Click this to measure a distance or area size.
9. **Sun** - Click this to display sunlight across the landscape.
10. **Sky** - Click this to view stars, constellations, galaxies, planets and the Earth's moon.
11. **Email** - Click this to email a view or image.
12. **Print** - Click this to print the current view of the Earth.
13. **Show in Google Maps** - Click this to show the current view in Google Maps in your web browser.
14. **Navigation controls** - Use these to zoom, look and move around (see below).
15. **Layers panel** - Use this to display points of interest.
16. **Places panel** - Use this to locate, save, organize and revisit placemarks.
17. **Add Content** - Click this to import exciting content from the KML Gallery
18. **3D Viewer** - View the globe and its terrain in this window.
19. **Status bar** - View coordinate, elevation, imagery date and streaming status here.

From: <http://earth.google.com/userguide/v4/#fivethings>